

# Welcome to Aberystwyth: Your Guide to the First Few Weeks at University



CROESO  
WELCOME



# A very warm welcome to you to Aberystwyth University

Congratulations and a very warm welcome to you to Aberystwyth University.

Although it is some time ago now, since I was also a new and nervous first year student here at Aber, I can still remember the excitement and the apprehension of starting this new chapter in my life. Aberystwyth is a great place to study, and to live. Importantly, you are joining an institution that wants to make a difference in the world, and change lives for the better through the work that we do not only here in Aber, but throughout the world. As a student of this university you will benefit from our excellent teaching. You will be taught by subject-leading academics who will share with you the latest thinking and discoveries in their areas.

Our focus is to ensure you have an outstanding education so that when you leave, not only will you have an excellent degree, but you will also have the knowledge, skills and confidence to make your mark on the world and make a positive difference to society. Coming to University is a life changing experience. It is the place for you to grow both academically and personally. I would like to encourage you to be curious, to ask questions and to embrace the opportunities that will come your way.

Over the next few days and weeks, you will be settling into your new environment, surrounded by new people, new experiences and a host of new opportunities.

Change can sometimes be a little daunting but be assured that there is a place for you here at Aber. Accessing this guide is the first step to informing yourself of all that is on offer and as you start to familiarise yourself with the University we want to help and support you in your transition, and for you to get to know the University better.

I wish you well for the first days and weeks at Aber, and hope to welcome you, in person, during welcome week and beyond.



**Professor Jon Timmis,  
Vice-Chancellor**

## AtAber – Get to know your University

**This is your place to discover, learn and grow.**

As you start to familiarise yourself with the university we want to support your transition to university, and for you to get to know the University better. Our AtAber – Get to know your University themes focus on seven key areas that will allow you to make the most of your time with us during your transition. Read more about our AtAber – Get to know your University themes from page 10 onwards.

### Contents

#### AberArrival Checklist

##### Settling into University:

Your Campus	4
Your Academic Department Buildings	6
Your Studies	8

##### Getting to know your University:

The Get to know your University Themes	10
Aber Belong	10
Aber Study	11
Aber Support and Wellbeing	12
Aber Languages and Careers	14
Aber Environment and Sustainability	15
Aber Skills	16
Aber Community and Culture	17

##### Settling into Aberystwyth:

The Town	18
Shopping and Supermarkets	20
This is your Place...	22

## AberArrival Checklist

- Connect to Campus Wi-Fi
- Get involved in Welcome Week Events and Activities
- Meet your department
- Complete your Course Registration
- Visit the Freshers Fair
- Explore Campus (Complete AberWelcome: The Campus Quest)
- Engage with the AberWelcome Department Peer Guides (if applicable)
- Complete the Online Consent Training
- Register with a GP
- Remember to speak up if you ever need help during your Aber Arrival



You can access a more detailed checklist here:  
[www.aber.ac.uk/en/welcome/aber-arrival/](http://www.aber.ac.uk/en/welcome/aber-arrival/)

### If you ever need help during your 'Aber Arrival'...

Staff will be on hand through the arrival period and we have a list of key contacts in our detailed checklist.

## 1 Connect to Campus Wi-Fi

When you arrive on campus ensure you connect to the university's main wireless network, called eduroam. You can then stay connected wherever you are on campus.

## 2 Get involved in Welcome Week Events and Activities

Welcome Week is a week of events and activities organised by various teams across the University for new students to get involved in! It's all aimed at welcoming you to campus, getting you settled, making friends and connections, feeling at home and familiarising with the campus.



Learn more:  
[www.aber.ac.uk/en/welcome/your-induction-planner/](http://www.aber.ac.uk/en/welcome/your-induction-planner/)

## 3 Meet your Department

Your Academic Induction is an important introduction to your course and subject before the work begins. This will be held over several days during your Welcome Week. Your department will have a range of activities planned over the week and beyond.



Learn more:  
<https://www.aber.ac.uk/en/welcome/academic-department/>

## 4 Complete your Course Registration

Remember before you can be known as a full-time or part-time student at Aberystwyth you will need to complete registration. If you find you need help to complete the Online Registration task or have other queries, you can go to the Registration Support Zone during Welcome Week or speak to your department.

## 5 Visit the Freshers Fair

The Freshers Fair organised by Undeb Aberystwyth (Students' Union) is a showcase of everything student life has to offer. Each day there will be a mix of different sports clubs, student societies, businesses and local organisations present. This is an unmissable experience of your Aber welcome.



Learn more:  
[www.abersu.co.uk/heloaber/](http://www.abersu.co.uk/heloaber/)

## 6 Explore Campus (Complete AberWelcome: The Campus Quest)

Take part in our fun interactive, and self-guided digital campus quest where you can get to know the campus and your new friends a bit better by doing it as a group even!



To get started, download the app for iOS or Android:  
[actionbound.com/bound/aber-welcome-campus-quest](http://actionbound.com/bound/aber-welcome-campus-quest)

## 7 Engage with the AberWelcome Department Peer Guides (if applicable)

Dependent on the department that you are studying with, you may be automatically contacted by a peer guide before you arrive, or contacted by your department to ask if you wish to sign up for a peer guide or not. During the Welcome period there will be opportunities for you to ask questions and receive information that will be of help.

**Note:** This doesn't apply with some academic departments.

## 8 Complete the Online Consent Training

Aberystwyth is a safe, equitable and inclusive university. We are committed to continually making our campus a safer place, with a zero tolerance to harassment, any hate crime, abuse and bystander behaviours. By learning more about consent and completing the training, help us keep Aberystwyth safe.



Complete the Training:  
[https://blackboard.aber.ac.uk/ultra/organizations/\\_49411\\_1/outline](https://blackboard.aber.ac.uk/ultra/organizations/_49411_1/outline)

## 9 Register with a GP

When you arrive at Aberystwyth we recommend that you register with a GP (family doctor) locally. We want to ensure that there is support and advice available to help you register with a GP. The process is simple and can be completed on-line.



Register here:  
[www.aber.ac.uk/en/student-services/student-health/#registering-with-a-gp-\(family-doctor\)](http://www.aber.ac.uk/en/student-services/student-health/#registering-with-a-gp-(family-doctor))

## Settling into University – Your Campus

### Your Student Services and Learning Facilities

We offer a range of services and facilities specifically to support you socially, for your well-being and future lives. Our Student Welcome Centre at the heart of Penglais campus with its friendly teams are available all year round, Monday to Friday, to give advice and support on a wide range of subjects, including accessibility requirements, wellbeing needs, financial advice, visa support, and settling into university life.

The library facilities and study spaces on campus are all located within a close proximity of each other also, which includes the Hugh Owen and Physical Sciences Libraries, as well as the The National Library of Wales which is just a minute walk away from campus. Don't forget we also have the Workstation in town too! Across all our study spaces students have access to computers, photocopying and printing services. In addition, as a new Aberystwyth student you can download Microsoft Office for your own computer for free!



**Find out more:**  
[www.aber.ac.uk/en/discover-aberystwyth/life-on-campus/student-services-learning-facilities/](http://www.aber.ac.uk/en/discover-aberystwyth/life-on-campus/student-services-learning-facilities/)

### Your Accommodation and Residence

Moving into your accommodation is an exciting time – however it can feel a little daunting. We can help this process by giving you practical information about your residences.

Find out information on the ResLife webpages regarding a variety of areas that you need to know about like cleaning and inspections, laundry facilities, mail, parking, waste and recycling to secure cycle storage and much more.



**Take a look:**  
[www.aber.ac.uk/en/accommodation/current-students/living-residences/](http://www.aber.ac.uk/en/accommodation/current-students/living-residences/)



### Your Sports Facilities

Whether you want to try something new or are dedicated to your chosen activities, our Campus offers facilities that range from a swimming pool and gym to a floodlit 3G pitch, squash courts and even a Nordic saunarium. Our fantastic new gym is kitted out with 130 training stations, including bikes, rowing machines and treadmills. Users can monitor their progress on digital screens powered in many cases by the energy they generate as they train. All students staying in University accommodation will be able to use all of the Sports Centre activities for FREE - this includes the Gym, Classes, Group Cycle, BoxRox climbing wall plus the Pool and Saunarium.



**See our Sports Facilities here:**  
[www.aber.ac.uk/en/sportscentre/](http://www.aber.ac.uk/en/sportscentre/)

### Your Undeb Aberystwyth (the Students' Union)

Undeb Aberystwyth (the Students' Union) wants Aber students to love student life, and works to ensure that Aber students are happy, healthy and empowered, with lasting friendships and promising futures.

Every student at Aberystwyth University is automatically a member of Undeb Aberystwyth, and being a member comes with some great benefits to help you through your time at University. Whether you want to join a sports club or society (we have over 100), want to volunteer or represent other students academically or otherwise, or just want some independent advice, then we are here for you!



**Learn more:**  
[www.abersu.co.uk/](http://www.abersu.co.uk/)

### Your Campus Cafés and Restaurants

Our cafes and restaurants prides itself on ensuring that all allergens and dietary requirements are catered for. Therefore, we try to ensure that there is adequate variety and consistency in our food options throughout our outlets across campus.

You can now take advantage of our fantastic value 'Eat with us, shop with us' flexible meal plan packages even if you are living in self-catered accommodation or private housing in town! Eat what you want, when you want, where you want, from hot dinners to Starbucks on the go or just pick up some ingredients to cook yourself.

### Your Arts Centre

Our award-winning Arts Centre on campus is the perfect place to see a show, watch a film, enjoy some treats and socialise with friends. There is something here for everyone, whether it is a London West End show or the ballet on tour, the latest film releases, specialist films, a range of festivals or some of the biggest names in comedy.

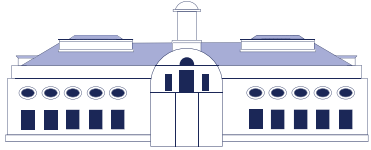
The Arts Centre hosts performances from major national and international touring companies, as well as producing its own in-house productions. Performances are presented in the Centre's 1,200-seat concert hall, 300-seat theatre and in the more intimate studio, and there's a busy programme of screenings in the 120-seat cinema.



**Learn more:**  
[www.aberystwythartscentre.co.uk/](http://www.aberystwythartscentre.co.uk/)



## Settling into University - Your Academic Department Buildings



### School of Art (Edward Davies)

The School of Art, or the Edward Davies Building, is located close to Penglais Campus and towards the town centre. It is home to Art and Photography.



### Carwyn James

The Carwyn James Building is home to Sport and Exercise Science.



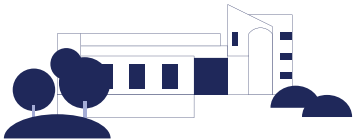
### Hugh Owen

The Hugh Owen Building is home to the Hugh Owen Library and the Departments of English & Creative Writing, Law & Criminology and Modern Languages. Aberystwyth Business School is also located here as well as the notable A12 and A14 lecture theatres.



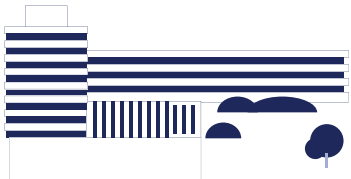
### Gwendolen Rees/Edward Llwyd

The Gwendolen Rees Building on Penglais Campus houses the Department of Life Sciences, and includes CAFFIBach cafe. Next door is the Edward Llwyd building which houses laboratories and teaching rooms.



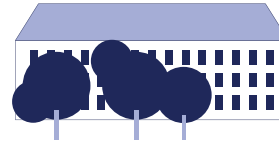
### International Politics Building

The International Politics Building is home to the Department of International Politics and History & Welsh History.



### Llandinam

The Llandinam Building includes the Departments of Geography & Earth Sciences and Computer Science.



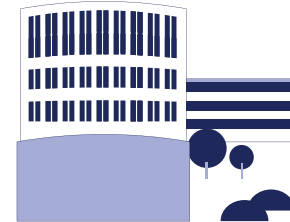
### P5

Located in the P5 Building are the Departments of Information Studies, Psychology and the School of Education.



### Parry Williams

The Parry Williams Building houses the Departments of Theatre, Film & Television Studies and Welsh & Celtic Studies.



### Physical Sciences

The Physical Sciences Building houses the Departments of Engineering, Mathematics and Physics, as well as the Physical Sciences Library.



### Veterinary Education Centre

The Veterinary Education Centre is home to the Aberystwyth School of Veterinary Science.



## Settling into University - Your Studies

### Undergraduate degree classification

A bachelor's degree involves studying one, or sometimes two, subjects in detail. It's the most common undergraduate degree here in Aberystwyth.

Typically classifications include:

- Bachelor of Arts (BA)
- Bachelor of Science (BSc)
- Bachelor of Education (BEd)
- Bachelor of Engineering (BEng)
- Bachelor of Laws (LLB)

Choosing a course in one subject is known as a single honours degree. You may be able to study a minor subject alongside the major subject for a portion of your degree, known as a major/minor honours degree.

Studying two or three major subjects as part of your degree is called a combined or joint honours degree. You'll pick several modules per subject, rather than doing every module for each subject. Each subject you take will hold equal weight towards your final degree.

### University grading system

The UK university grading system is based on a numerical scale, typically ranging from 0 to 100, or 0 to 70.

Classification	Mark	Letter Grade Equivalent
First class (1st)	70% +	A
Upper second class (2:1)	60-69%	B
Lower second class (2:2)	50-59%	C
Third class (3rd)	40-49%	D
Fail	0-39%	E/F

### Course

Your course is basically your degree.

### Coursework

Written or practical work done by a student during a course of study, usually assessed in order to count towards a final mark or grade.

### Modules

Courses have a 'modular' structure. This means that you can build a personalized course by choosing modules or units of study from different subject areas. For example, if you are studying English Literature, then for your first year you could choose one module on science fiction, or one module on children's literature, and one module on short stories.

At the beginning of each part of your programme, you register for specific modules. You will have core modules, and these are essential modules for your course and cannot be changed. As well as this you will have optional modules that you can choose.



### Lectures

Lectures are one of the main ways that you will be taught at university. These are talks or presentations, typically lasting an hour, and are delivered by a member of the academic staff.

There may be 20 to 300 students in the lecture theatre. The lecturer will provide a guide to the topic and indicate important points and themes for you to consider. You will be expected to listen and take notes, as you can review the PowerPoint slides online via Blackboard anytime.

### Seminars

Seminars are group discussions where your tutor or lecturer plans the theme. These are excellent learning opportunities. It's normally the lecturer's job to share the goals of the discussion, arrange practicalities like seating and introductions, steer the discussion and to bring the seminar to a close.

### Workshops or Tutorials

These are much smaller than lectures and consist of small groups of students, led by an academic tutor. In these classes you will develop a better understanding of topics and integrate ideas from your reading and lectures. The key difference between lectures and tutorials or workshops is the level of participation expected from you. For tutorials you will be expected to have read about the subject in advance and participate in the discussions, exchanging ideas and views with other students and the tutor.

### Access to Blackboard

You can download the blackboard app in advance and login with your student email. As well as this, you can access it online by doing an online search and login on the Blackboard Webpage.



# Get to know your University Themes

## 1 Ymgartrefu Aber Aber Belong

### This is Your Place for an Aber Life!

Aber Belong is about making friends and connections, feeling at home and familiarising with the campus.

### Induction Planner

Use your Personalised Welcome and Induction Planner to help you navigate the events specific for you during Welcome Week and the first few weeks at the University.

Find out about all of the departmental activities organised for you, as well as the

extracurricular opportunities at Aber. To make the most of your first University experiences, meet new people or just have fun use the Induction Planner to find out what events are going on.



#### Take a look:

[www.aber.ac.uk/en/welcome/your-induction-planner/](http://www.aber.ac.uk/en/welcome/your-induction-planner/)



## 2 Astudio Aber Aber Study

**This is Your Place to Learn and Develop!** Aber Study is about developing good practices in your studies, and to familiarise yourself with our library services and lifelong learning opportunities.

### Study Materials

Search, find and discover electronic resources, books, journals, newspapers and much more using Primo, our library catalogue. You can search for everything the library has to offer from a single search box. Add items to your favourites, use Primo off-campus, request items, use your reading list to find books and so much more.

### Study Help and Support

Subject Librarians provide information skills training and in-depth subject support for students and staff, and liaise with academic departments regarding their library and information needs and use of Aspire Reading Lists. You can email, phone or book an appointment with your Subject Librarian for help and advice on using the libraries, finding materials for assignments, referencing and more!

### Our Libraries and Study Spaces

The Hugh Owen Library is the main University Library. Based on Penglais campus it provides a space to study, whether you wish to study quietly on your own or with others. A range of facilities are provided both to help you with your studies and for quiet relaxation.

The Physical Sciences Library is also located on the main Penglais Campus and houses the Computer Science, Maths and Physics collections, as well as plenty of study spaces.

You can access our libraries and study spaces with your Aber Card. There are a variety of silent, individual and group study spaces available in the Iris de Freitas Room and on Level D and Levels E & F of the Hugh Owen Library.

### Consider Degree Boosters that can help you stand out from the crowd!

The University offers Lifelong Learning courses that are in addition to your degree course and can be taken without interfering with your timetable. You can take one course per term and learn something new that's of a personal interest or you can study a course that will support and complement your degree.

What's great is that this is included in your fees so there's no additional cost to you either! Topics range from Languages so that

you can travel abroad, Ecology to extend your knowledge of different species, Art and Design in niche areas; Genealogy and Marketing to widen skills so you can work as a freelancer and more.



#### Courses:

[www.aber.ac.uk/en/lifelong-learning/](http://www.aber.ac.uk/en/lifelong-learning/)

### 3 Cefnogaeth a Lles Aber Aber Support and Wellbeing

#### **This is Your Place to Thrive and Be Supported!**

Aber Support and Wellbeing is all about you being able to thrive and feel supported from the services we can provide you. Support is here when you need it.

#### **Student Services**

Student Services are here to help you make the most out of your time at Aberystwyth University and maximize your opportunities after graduation. Working collaboratively across the University and with external services, we offer all students a range of support and resources, no matter what challenges you might face.

Our friendly teams are available all year round, Monday to Friday, to give advice and support on a wide range of subjects, including accessibility requirements, wellbeing needs, financial advice, visa support, and career guidance.



**Learn more:**  
[www.aber.ac.uk/en/student-services/](http://www.aber.ac.uk/en/student-services/)

#### **Accessibility Service**

We aim to provide all students with an experience of the highest quality, and to make our academic facilities available to all who meet our entrance requirements. For disabled students, those with long standing physical/mental health conditions or a specific learning difference, we aim for an inclusive curriculum accessible to all, adapted accommodation, and access to learning areas which are equipped with computers, special hardware, additional software and laptop access. We can offer you advice on individual examination arrangements and enabling technology so that you can reach your full potential and get the good results you deserve.

#### **Advice and Money Service**

The Advice and Money Service provides information and support for topics including money management, student finance issues & hardship. We can provide you with information about University rules and regulations including academic regulations or harassment. We can advise you on withdrawal or change of course and what to do if unforeseen circumstances affect your studies. If you are unsure about where to go for advice or assistance please contact us.

#### **Wellbeing Service**

The Student Wellbeing Service understands the importance of maintaining a healthy wellbeing to enable students to thrive in their time here at Aberystwyth University and beyond. We are here to help any student with any wellbeing issue, whether it is an issue about friendship, bereavement, anxiety or workload stress, mild to moderate or severe and enduring mental health issues.



#### **Harassment and Misconduct: Prevention and Support Service**

Aberystwyth University is committed to promoting a safe and supportive campus environment for every member of our community. Whether you have experienced sexual harassment or sexual violence yourself, or you're supporting someone who has, we offer support options, reporting options, and where to go for further advice:



**Further advice:**  
[www.reportandsupport.aber.ac.uk](http://www.reportandsupport.aber.ac.uk)

Also remember that the Residence Life Team are here to help you have the best student experience possible and inspire you to make the most of your time here at Aberystwyth University.

#### **Join societies, clubs and volunteering projects**

We have new facilities in the form of a Sports Dome which offers state-of-the-art cardio equipment, and strength & conditioning apparatus as well as a pool, climbing wall and sauna. The various fitness classes range from Spin, Fitness and Aerobic as well as Pilates and Yoga to name just a few.

As well as the Sports Centre there are loads and loads of sports clubs you can join. If sport's not your thing then don't worry - the amount of societies, clubs and even volunteering projects you can join are incredible. Find out more here what Undeb Aber offers:



**Find out more:**  
[www.abersu.co.uk/teamaber/societies/](http://www.abersu.co.uk/teamaber/societies/)



## 4 Ieithoedd a Gyrfaedd Aber Aber Languages and Careers

### **This is Your Place for Real World Experiences!**

Aber Languages and Careers is about you growing beyond boundaries. Find out about languages you can learn, practical opportunities to enhance your employability and real world opportunities whilst you're here in Aber.

### **Learn another language if interested and have the time**

You might not be aware that the university provides help for you to learn a new language if you are interested in doing so and all this is free of charge! You can learn European Languages to Arabic, Chinese, Japanese and Russian.

Lifelong Learning also runs the Language Exchange Portal where you work in tandem with a learning partner to learn your partner's language, while they learn another language from you.



#### **Take a look:**

[www.aber.ac.uk/en/lifelong-learning/modern-languages/](http://www.aber.ac.uk/en/lifelong-learning/modern-languages/)

### **Careers Service**

The Careers Service provides an excellent and supportive service which empowers individual students and graduates to realise their aspirations, make informed life choices and achieve their potential. The Careers Service is here to help you understand how you can make your university degree, and all the experiences open to you whilst at University, count towards your future career.

### **Welsh Language**

Did you know that Welsh is one of the fastest growing languages in the UK, according to Duolingo? Aberystwyth University is a bilingual institution where Welsh is used routinely in its teaching and administration. We operate a bilingual policy to ensure that the Welsh language is treated no less favourably than English.

During your time in Aberystwyth, you may like to learn some Welsh. There are plenty of opportunities to do so here at the University. If you are under 25, you can register on a Welsh course for free.



#### **Learn more:**

[www.aber.ac.uk/en/learn-welsh/](http://www.aber.ac.uk/en/learn-welsh/)



## 5 Amgylchedd a Chynaliadwyedd Aber Aber Environment and Sustainability

**This is Your Place to Make a Difference!** Aber Environment and Sustainability is an opportunity to bring together the diverse and extensive sustainability work that we are involved in. You can get involved and celebrate our sustainability projects and initiatives from areas like biodiversity to transport.

### **On the path to net zero**

At Aber, we're leading the sector with our ambitions to become a carbon neutral campus by 2030. The University has risen into the UK top 30 in new sustainability rankings for higher education and the joint best university for clean energy! Since 2020, we have invested over £6M in energy efficiency measures such as LED lighting, and £3.3M in renewable energy projects.

We have a range of opportunities and events for you to get involved in on our student engagement webpage:



#### **Get Involved:**

[www.aber.ac.uk/en/about-us/sustainability/environment-sustainability/](http://www.aber.ac.uk/en/about-us/sustainability/environment-sustainability/)



## Sgiliau Aber Aber Skills

**This is Your Place to Be Skilled!** Aber Skills is about helping you to expand, explore and improve your digital skills as a student here in Aber! Learn with us about digital discovery tools, to how artificial intelligence can be used for your own good.

### AberSkills Portal

AberSkills is a centralised bilingual platform providing a comprehensive range of skills guidance, advice, resources, and support all conveniently located in one place. Whether seeking assistance with writing assignments, refining mathematical and statistical abilities, or participate in workshops focused on good academic practices and skill development, AberSkills offers a user-friendly space for you to develop and improve various aspects of your skill set.



**Learn more:**  
[www.aber.ac.uk/en/aberskills/](http://www.aber.ac.uk/en/aberskills/)

## Cymuned a Diwylliant Aber Aber Community and Culture

**This is Your Place to Explore!** Aber Community and Culture is about exploring our community and your new home from home. We want to make you aware that you're never far away from an enriching cultural experience here at Aber and the surrounding area. Not only do we offer a great learning environment but a diverse and engaging campus community also.

### Explore our campus and surrounding area

We always recommend new students to take some time to explore our lovely campus and beyond. You will be able to see what facilities we have which you can take advantage of - from our great study areas, cafes and green spaces to our new sports dome and so much more. Aberystwyth is a small town so you will find that you will be able to walk or cycle to most places. Both the University Campus and Halls of Residence are within a short walk of one another. There are regular buses between Aberystwyth and the campus

Local Transport companies' websites can be found here:



**National Express:**  
<https://timetables.nationalexpress.com/routes/NX/409/London-Aberystwyth-University/O>



**Transport for Wales:**  
[www.tfw.wales](http://www.tfw.wales)



**Traws Cymru:**  
<https://traws.cymru/en>

### Faith Space

The Faith Space is somewhere that members of our University community can pray, meet and relax. Located in the Arts Centre, to the right of the Piazza Café, students and staff can access from the side of the building, from the concourse outside the Arts Centre/Students' Union.

The faith space is open 7 days a week. Between 8am-5pm any member of our community can access the space by swiping their Aber Card.



**Learn more:**  
[www.aber.ac.uk/en/equality/inclusivespaces/faith-provision/](http://www.aber.ac.uk/en/equality/inclusivespaces/faith-provision/)



## Settling into Aberystwyth – The Town

Aberystwyth as you'll soon find out is affectionately known as 'Aber'! Nestled between the Cambrian Mountains and Cardigan Bay you'll find that our historic seaside market town has a diverse and welcoming community and a cosmopolitan Welsh culture. With so much on offer, you'll be spoilt for choice.

### The Town

With three beautiful beaches to choose from, North Beach, South Beach and Tan-Y-Bwlch Beach, there's no better place to try to spot some dolphins. Or in the summer, you can enjoy watching the sun go down with a small fire or BBQ.

Made up of colourful and characterful Victorian architecture, the town's buildings are formed around the landscape, overlooking the sweeping 2km promenade, where students, locals and visitors mingle as they walk, jog or ride along.

There is plenty to do - from visiting the numerous high-street and boutique shops, cafes and restaurants - to exploring the local sights of the National Library, Cliff Railway, Constitution Hill, Seafront, Bandstand, Old College, Castle Ruins, Harbour and more.

Aberystwyth was the first town in Wales to win the coveted Purple Flag for a welcoming and safe nightlife. Its lively nightlife also provides great entertainment, with the Aberystwyth Arts Centre, Undeb Aber (Our Students' Union), Royal Pier, a range of bars and pubs (around 50 of them!), night clubs and more - all in close

proximity. You can enjoy a night of live music, stand-up comedy, or just a relaxing night out with friends and more.

There are plenty of sports and societies you can enjoy here too. From trekking up hillsides or cycling down mountain bike trails, or if you're a keen triathlete, surfer, kayaker, mountain climber or simply enjoy the outdoors then you will never have to travel far to enjoy your passions. With over 50 competitive sport clubs and a wide variety of over 100 societies these, along with Aberystwyth's location, provide the perfect backdrop to share

interests, grow in community and make friends for life.

**Welcome to our academic community that allows you to explore new opportunities and empowers critical minds, in an environment like no other!**





## Settling into Aberystwyth - Shopping and Supermarkets

### Shopping

Aberystwyth is a shopping centre for a wide area of Mid and West Wales, so has many of the major retail chain stores in or near the town centre. The real pleasure of shopping in Aberystwyth is the many and varied independent shops.

Shops are usually open 09.00-17.30 Monday to Saturday, although some supermarkets are open from 07.00-22.00 and one or two places are open 24 hours. Many shops are also open on Sundays for a shorter time.

### Food Shopping

You can buy traditional and local produce, including organic and vegan products at the outdoors Farmer’s Market Aberystwyth on the first and third Saturday of every month. There are also independent butchers, bakers and a fishmonger in town.

### Supermarkets

We have a range of supermarkets available within the town Lidl, Iceland and Tesco supermarket are located near the train station. There is a relatively small supermarket called CK’s which is on the top of Penglais hill, near to the University’s halls of residence.

Here’s a quick guide to what some of the supermarkets in Aberystwyth offer:

Shop	Pricing	Kosher	Halal	Vegan
B&M	£			
Home Bargains	£			✓
Lidl	£		✓	✓
Tesco	££	✓	✓	✓
Morrisons	££	✓	✓	✓
Iceland	££		✓	✓
Spar	£££			✓
M&S	£££		✓	✓





## Settling into Aberystwyth - This is your Place...

For a snapshot of what Aberystwyth and the community has to offer we've highlighted some of the key places to explore; to view nature and wildlife; to take part in local traditions and for culture, events and activities...

This is your place to explore



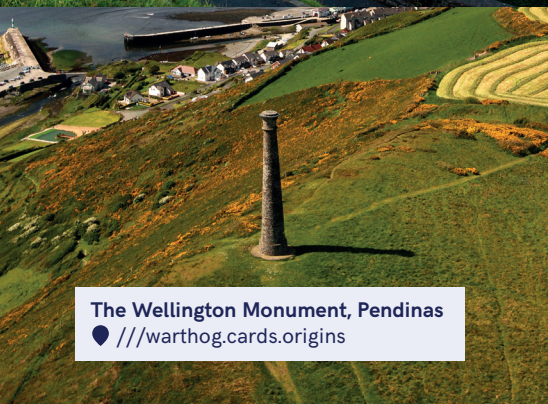
**Ceredigion Coastal Path**  
 📍 [///staples.suggested.vine](https://staples.suggested.vine)



**Aberystwyth Castle and The Old College**  
 📍 [///newlywed.admiral.florists](https://newlywed.admiral.florists)



**Ynyslas Dunes**  
 📍 [///tentacles.wades.violinist](https://tentacles.wades.violinist)



**The Wellington Monument, Pendinas**  
 📍 [///warthog.cards.origins](https://warthog.cards.origins)

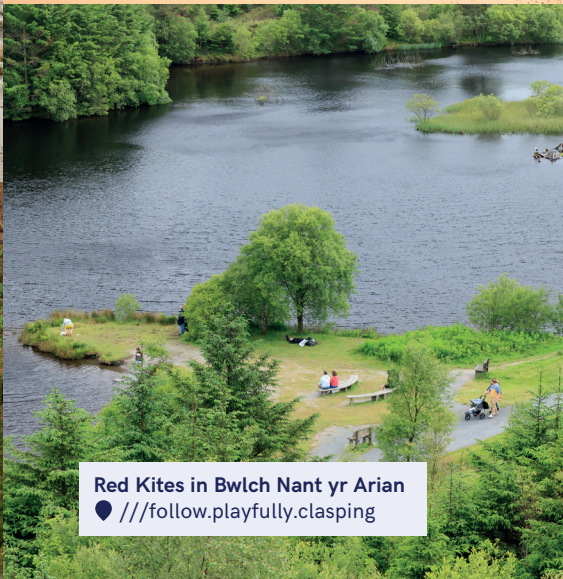


**Devil's Bridge waterfalls**  
 📍 [///hardens.draining.noun](https://hardens.draining.noun)

This is your place for nature and wildlife



**A starling murmuration over the Royal Pier**  
 📍 [///reference.stems.firework](https://reference.stems.firework)



**Red Kites in Bwlch Nant yr Arian**  
 📍 [///follow.playfully.clasping](https://follow.playfully.clasping)



**Dolphins in Cardigan Bay**  
 📍 [///staples.modem.below](https://staples.modem.below)



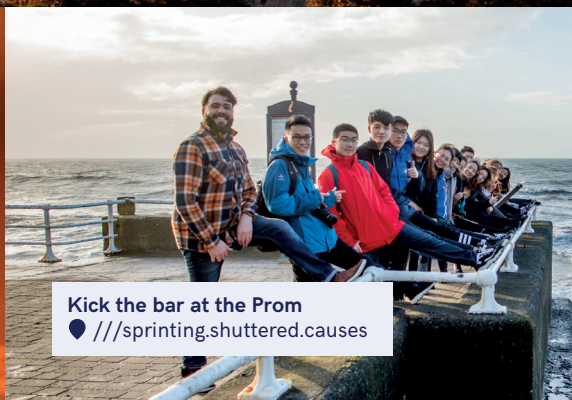
This is your place to take part in local traditions



Walk or take the Cliff Railway up Constitution Hill  
 ♥ [///chapels.person.overtones](https://chapels.person.overtones)



Watch the North Beach sunset  
 ♥ [///removers.dwarf.sensibly](https://removers.dwarf.sensibly)



Kick the bar at the Prom  
 ♥ [///springing.shuttered.causes](https://springing.shuttered.causes)



Steam train to Devil's Bridge  
 ♥ [///protected.factoring.factoring](https://protected.factoring.factoring)



Bonfire at South Beach  
 ♥ [///arrow.something.conquest](https://arrow.something.conquest)

This is your place for culture, events and activities



National Library of Wales  
 ♥ [///being.hats.mango](https://being.hats.mango)



A concert in the Arts Centre  
 ♥ [///intruded.brambles.remainder](https://intruded.brambles.remainder)



Aberystwyth Comedy Festival  
 ♥ [///intruded.brambles.remainder](https://intruded.brambles.remainder)



Parkrun  
 ♥ [///tilts.older.stoops](https://tilts.older.stoops)



Rowing competition along Cardigan Bay  
 ♥ [///staples.modem.below](https://staples.modem.below)

## **Key Contacts**

### **24/7 University Helpline**

 01970 622900

### **Academic Registry**

 [ugfstaff@aber.ac.uk](mailto:ugfstaff@aber.ac.uk)  [pgsstaff@aber.ac.uk](mailto:pgsstaff@aber.ac.uk)

 01970 622290

### **Accommodation**

 [accommodation@aber.ac.uk](mailto:accommodation@aber.ac.uk)  01970 622984

### **Around the clock Security**

 [ssestaff@aber.ac.uk](mailto:ssestaff@aber.ac.uk)  01970 622649

### **Careers Service:**

 [careers@aber.ac.uk](mailto:careers@aber.ac.uk)  01970 622378

### **I.T. Services**

 [it@aber.ac.uk](mailto:it@aber.ac.uk)  01970 622400

### **Library Services**

 [library@aber.ac.uk](mailto:library@aber.ac.uk)  01970 622020

### **Multi-Faith Space**


 [equality@aber.ac.uk](mailto:equality@aber.ac.uk)  01970 628424

### **Sports Centre**

 [sports@aber.ac.uk](mailto:sports@aber.ac.uk)  01970 622280

### **Student Support Services**

 [student-support@aber.ac.uk](mailto:student-support@aber.ac.uk)

 01970 621761 or 01970 622087

### **Undeb Aberystwyth (Students' Union)**

 [union@aber.ac.uk](mailto:union@aber.ac.uk)  01970 621700